

LINDA McCRAY
Luminosity



Called to the Light

Through the fog of life, we are called to the light. Our difficult times are expressed by moody subdued colors, stormy abrasive textures and modern drip lines. Unclear luminous yellows, purples and blues speak of our uncertain times.

60 x 60 x 2 in.
Acrylic paint with sand from
the River Jordan and Montana
on floating wood panel

LINDA McCRAY

Luminosity



LINDA
McCRAY
Studio, LLC

LindaMcCray.com

Paintings copyright
© 2024 by Linda McCray.
All rights reserved.



*THE SPIRITUAL IN ABSTRACT: Paintings by Linda McCray
Holter Museum of Art, Helena, Montana, 2020 Solo Exhibition*

LINDA McCRAY

Luminosity

This art exhibition features boundary-transcending abstract spiritual paintings by Montana-based artist Linda McCray. McCray's ethereal abstraction and soulful conceptual work brings up-to-date the oldest theme in art, the spiritual. While her provocative paintings have specific meaning to herself, McCray underlies her transcendent illuminations with cross-cultural sensibilities to ignite spiritual curiosity and unique experiences for all.

Our aspiration for this exhibition is for viewers to truly discover the profound significance of luminosity within McCray's vast array of paintings. Each of her conceptual paintings sparks the mystery of light in a visually distinct way.

Exhibition Includes:

- Paintings from this catalog
- Artist Talk
- Workshop: Abstract Painting, Expression and Appreciation



Glimmer of Grace

Light pours down on us, even in turbulent times. Bold brushstrokes thrust dark browns, golden yellows and gray blues into chaos. Splashes of gold paint symbolize the mystery of grace. The dark areas convey the stormy time. I textured these areas with sand from the River Jordan and Montana to remind us that we are on holy ground, wherever we are. The diamond shape does not sit on a stable side. It floats in motion.

84 x 84 x 2 in.
Acrylic with sand from the
River Jordan and Montana
on floating wood panel

ARTIST STATEMENT

I translate universal spiritual truths into luminous abstract paintings that speak to others, regardless of their traditions.

To form visible signs of invisible grace, I use abstraction which—so powerfully through light, color, and texture—speaks directly to the heart.

I layer my paintings with symbolism. To create symbolism, I use abstract elements, certain materials, and selected painting methods. For example, the abstract element and universal symbol of light underlie all of my paintings. I image my Creator as light. To capture feelings of the warmth and peace of the divine presence, I use a number of techniques including the old masters' use of glazes to capture luminosity. I integrate found objects that abound with symbolism, such as sand from the River Jordan and Montana. The torn-like edges symbolize that we are a part of something much greater—our collective Creator.

I sign my paintings with my initials going outside a box, because my art doesn't fit into any art style box. I create from my heart. I don't follow trends. I'm an independent artist.

I create small to large scale acrylic paintings on floating wood panel.



Passion to Pentecost

I symbolized five wounds with the abstract element of red drips of paint; resurrection with gold drips upward; and the event of Pentecost with a few white brushstrokes evoking a dove and the color red flaming down from above.

72 x 114 x 2 in.
Acrylic with sand from
Montana on floating
wood panel

Often old story-telling altarpieces lost panels and were restored with different found sections, thus the panels of this painting are designed to look randomly placed. The triptych format of three panels is a symbol for the Trinity, which came to be on Pentecost.

BIOGRAPHY

Linda McCray, MFA, is an American visual artist whose studio is nestled in the solitude of the Rocky Mountains of Montana.

McCray's luminous abstract paintings have been exhibited in the US and England; published in Belgium, Germany, Canada, and the United States; and are in public and private collections. Private collectors and organizations have commissioned McCray to create paintings that speak of their mission.

As an adjunct professor of art, she taught for Loyola University Chicago, The University of Mary, Helena College, The University of Montana, and Carroll College. She has lectured at art museums, universities, and conferences; written published articles for national magazines; served as art consultant; and been an artist-in-residence at the Holter Museum of Art and Blessed Trinity Catholic Community.

She graduated cum laude from Washington State University with a BA in Fine Arts and the University of Montana with a MFA in Painting and Drawing.

Curriculum Vitae available at LindaMcCray.com



Family Tree of Oneness

Oneness of all is expressed through unified gold drip lines. Light is the core of our being, symbolized by a luminous tree trunk. Rich greens express life. The tree form can be read as a cross, which is often referred to as the tree of life.

60 x 60 x 2 in.
Acrylic with sand from the
River Jordan and Montana
on floating wood panel



Rays of Peace

Bold white brush marks symbolize a dove, which in turn symbolizes peace. Modern gold drip lines flow from a field of blue and dove to express rays of peace reaching down to all of us, regardless of our traditions.

Inspired by Baroque art, I used gold and drama in abstract contemporary ways. Baroque art is known for its lavish gold and high drama.

36 x 70 x 2 in.
Acrylic with sand from the River Jordan and Montana on floating wood panel

LINDA McCRAY: Luminosity



Embraced in Spirit

Sweeping white textured paint forms a subtle abstract dove, a symbol for the spirit. We are all embraced by the spirit, which is conveyed by an encompassing elliptical mystical aura of light, blue and gold. Deep translucent blues immerse us in the cosmos and thundering gold directs us to the light.

48 x 24 x 2 in.
Acrylic with sand from the River Jordan and Montana on floating wood panel



Body & Spirit

Our earthly body is portrayed with heavy textured paint grounded with sand from the River Jordan and Montana. The free flowing modern drip lines and droplets express our mystical spirit. The two entwine in wholeness. Transcendent blue gives way to sublime light.

60 x 60 x 2 in.
Acrylic with sand from the
River Jordan and Montana
on floating wood panel



Following the Light

Following the light is an unclear path, conveyed through soft undefined shapes and subtle warm colors. Sometimes we meet challenging times, portrayed with dark green brashly painted. Light is with us through it all, symbolized by luminosity created with the old masters' technique of glazing.

24 x 24 x 2 in.
Acrylic with sand from the
River Jordan and Montana
on floating wood panel



Replenish

Luminous spring green and light colors replenish worn opaque brown. In this glimpse of creation, our Creator is in both the darkness and light.

24 x 18 x 2 in.
Acrylic with sand from the
River Jordan and Montana
on floating wood panel



Unexpected Blessing

Modern gold drip lines convey an unexpected blessing pouring out of the blue. Rough textured dark paint is highlighted in gold, expressing how through it all we are touched by the divine.

60 x 24 x 2 in.
Acrylic with sand from the River Jordan and Montana on floating wood panel



In the Beginning

Light is revealed through pure mystical colors. Lively brush marks express spiritual nature or perhaps books opening. A circle of light symbolizes our Creator.

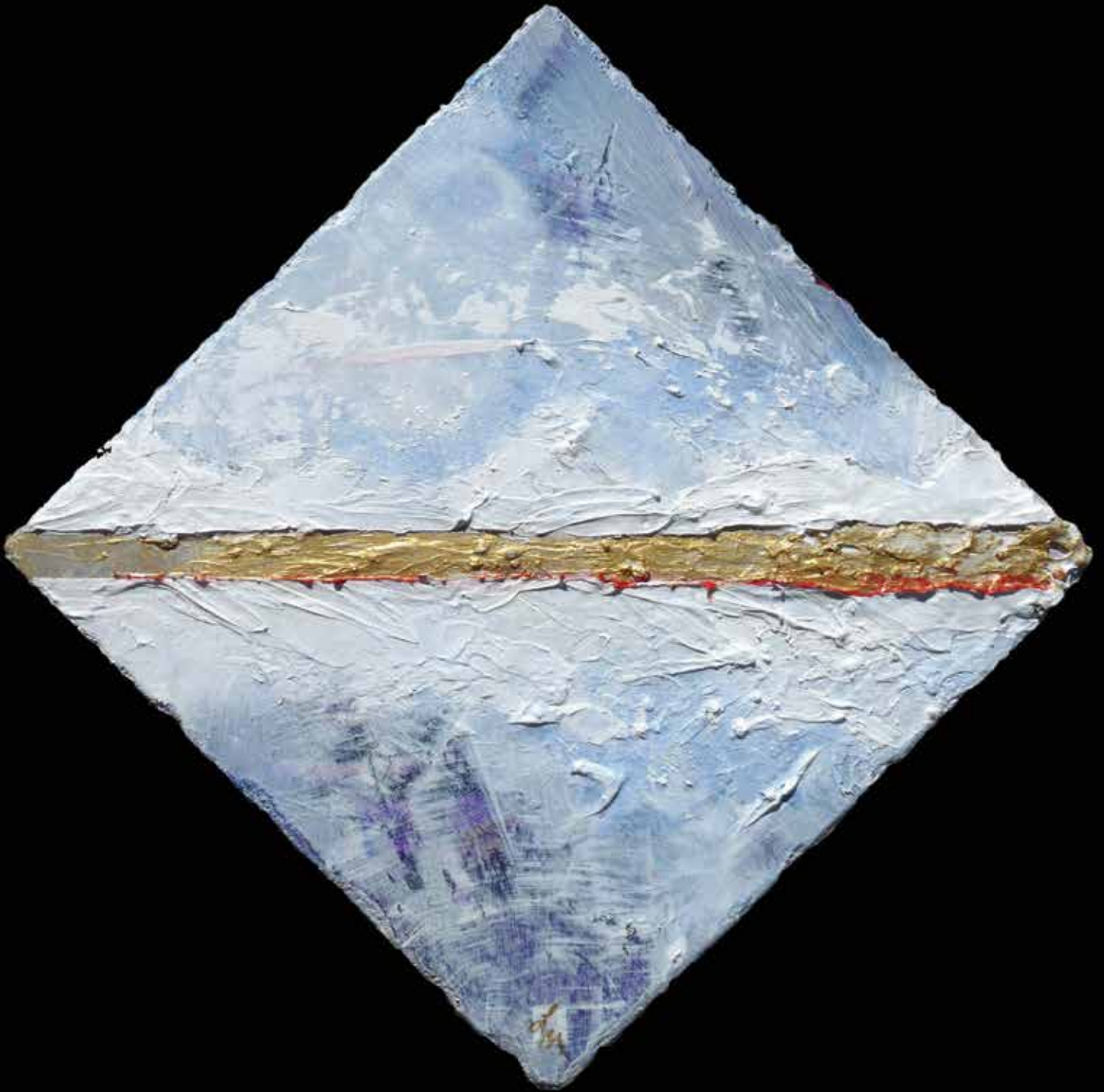
60 x 60 x 2 in.
Acrylic with sand from the
River Jordan and Montana
on floating wood panel



Tent of Meeting

This painting portrays a place of gathering and connecting—physically and spiritually. The cloud is a symbol of the spirit leading us, in all the stages of our journey. The tent of meeting alludes to our flight as communities in mission, illuminated with glory.

21.5 x 15 x 2 in.
Acrylic with sand from the
River Jordan and Montana
on floating wood panel



Healing Light

Whether we look within to our individual brokenness or outward to global division, light heals us. Through the depth of deep purples, to far reaching blue skies, rises divided thick cloud-like paint mended with gold.

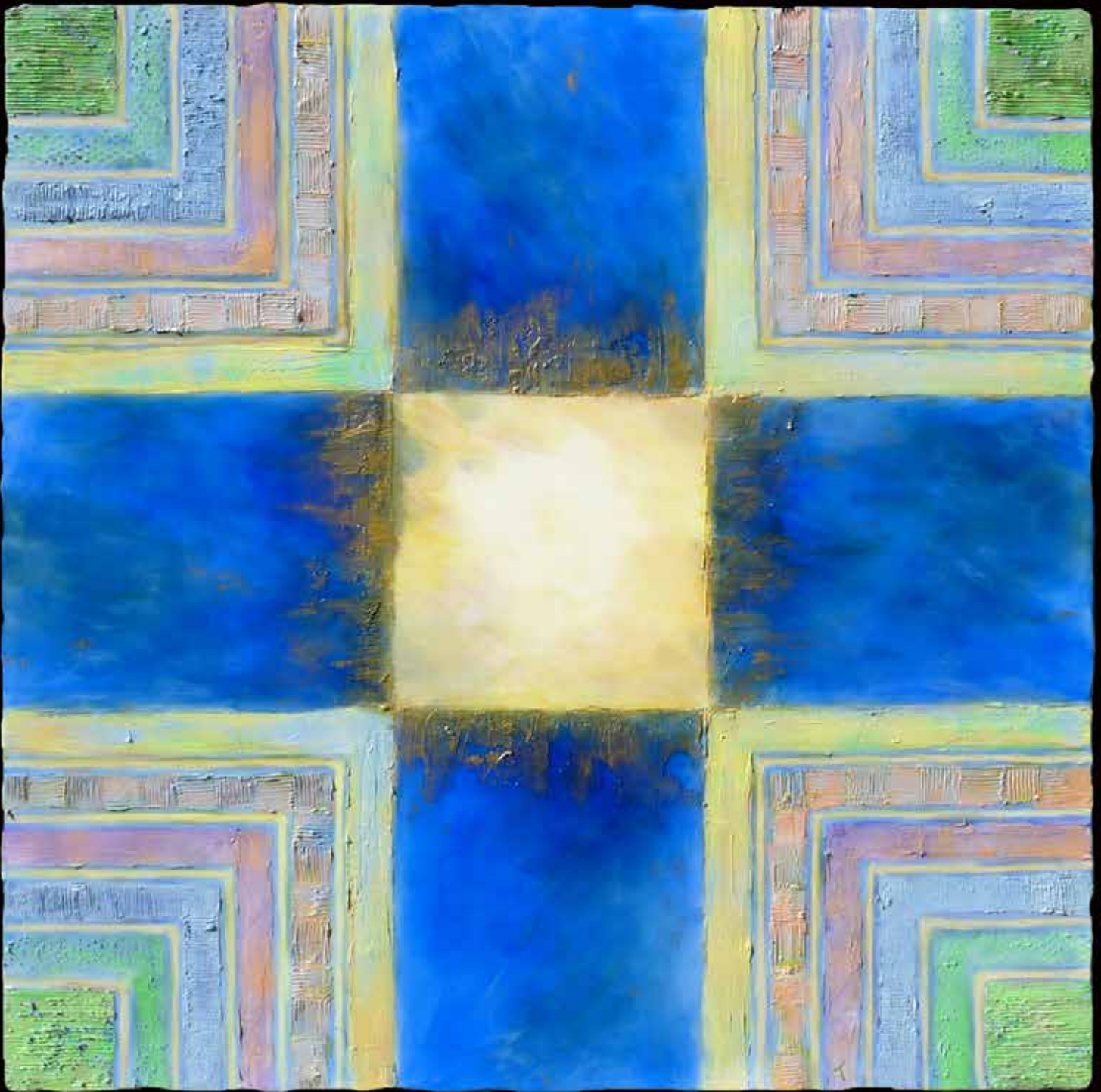
18 x 18 x 2 in.
Acrylic with sand from the River Jordan and Montana on floating wood panel



Before & Beside

Light before us is symbolized by a circle enlivened with drips of paint. The central area background is rich with subtle blues and purples to express ethereal distance in front of us. Subtle yellows bring the sides forward to embrace us in light. The drips of gold are rays of light, here and now.

12 x 23.5 x 2 in.
Acrylic with sand from the River Jordan and Montana on floating wood panel



Rivers of Love

The light of love emanates from the center and flows in all directions. Blue and light yellow lines express spiritual nourishment reaching all of us. Harmonious fields of unifying colors speak of diversity in our oneness.

60 x 60 x 2 in.
Acrylic with sand from the
River Jordan and Montana
on floating wood panel



Always Hope

Darkness is conveyed through layers of translucent blue paint. Subtle crosses of gold, orange and green speak of our struggles. Always hope is conveyed through a stream of warm white and light yellow paint from above.

48 x 24 x 2 in.
Acrylic with sand from the River Jordan and Montana on floating wood panel



In and Within

The mystery of our Creator all around us is symbolized by the freely painted outer circle. The dark green square speaks of our humanity and the small circle of subtle colors our inner light. Throughout the ages, circles have symbolized divinity and squares humanity.

12 x 12 x 2 in.
Acrylic with sand from the
River Jordan and Montana
on floating wood panel



Dispelling Darkness

Divine gold and sky blue prevail and dispel darkness. Gloom is expressed through shattered muted purple and dusky green.

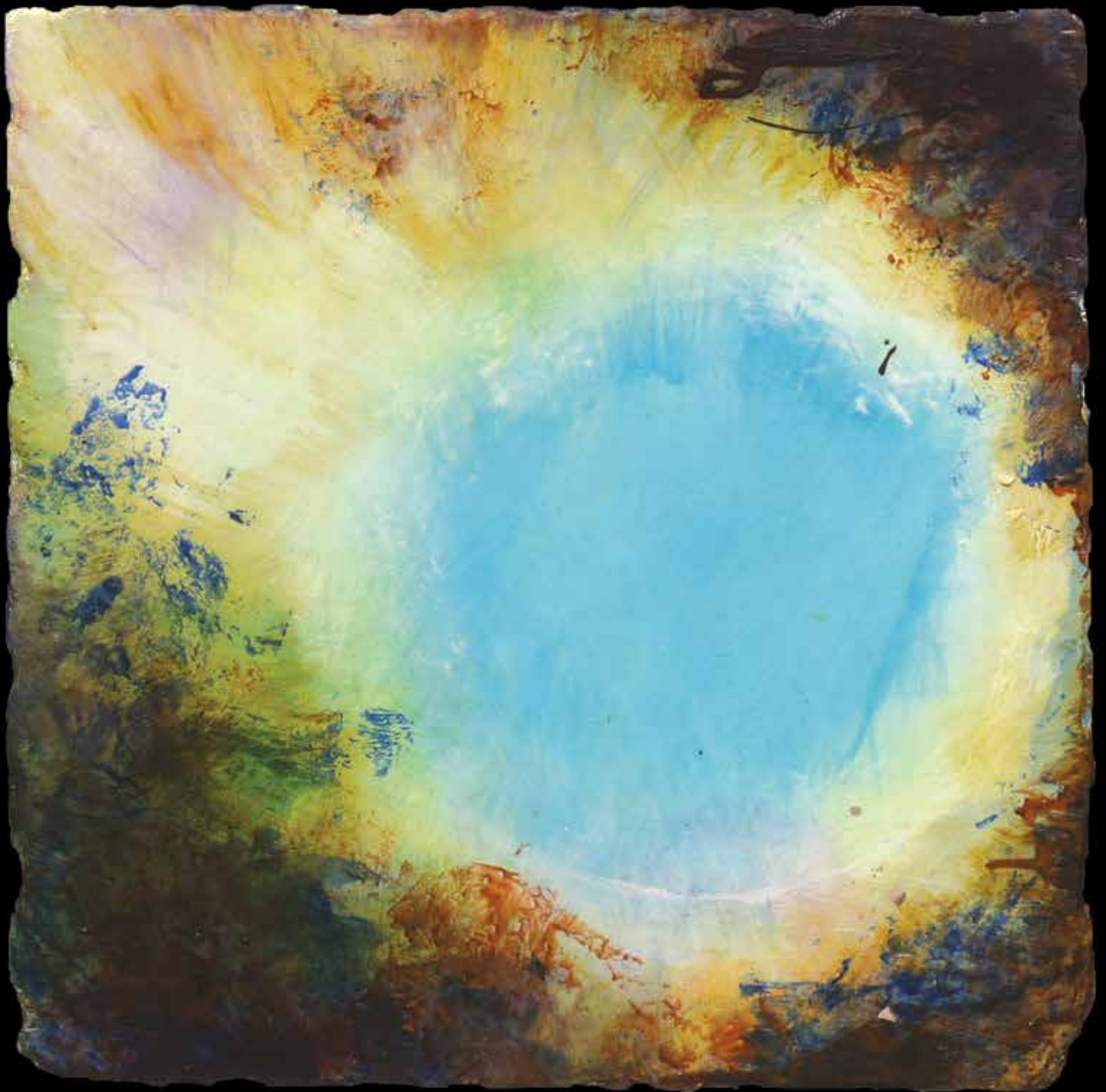
12 x 12 x 2 in.
Acrylic with sand from the
River Jordan and Montana
on floating wood panel



Breath of Life

Breathing is vital—physically and spiritually. Vibrating curved shapes and levitating highly textured gold paint evokes the ethereal nature of the moment.

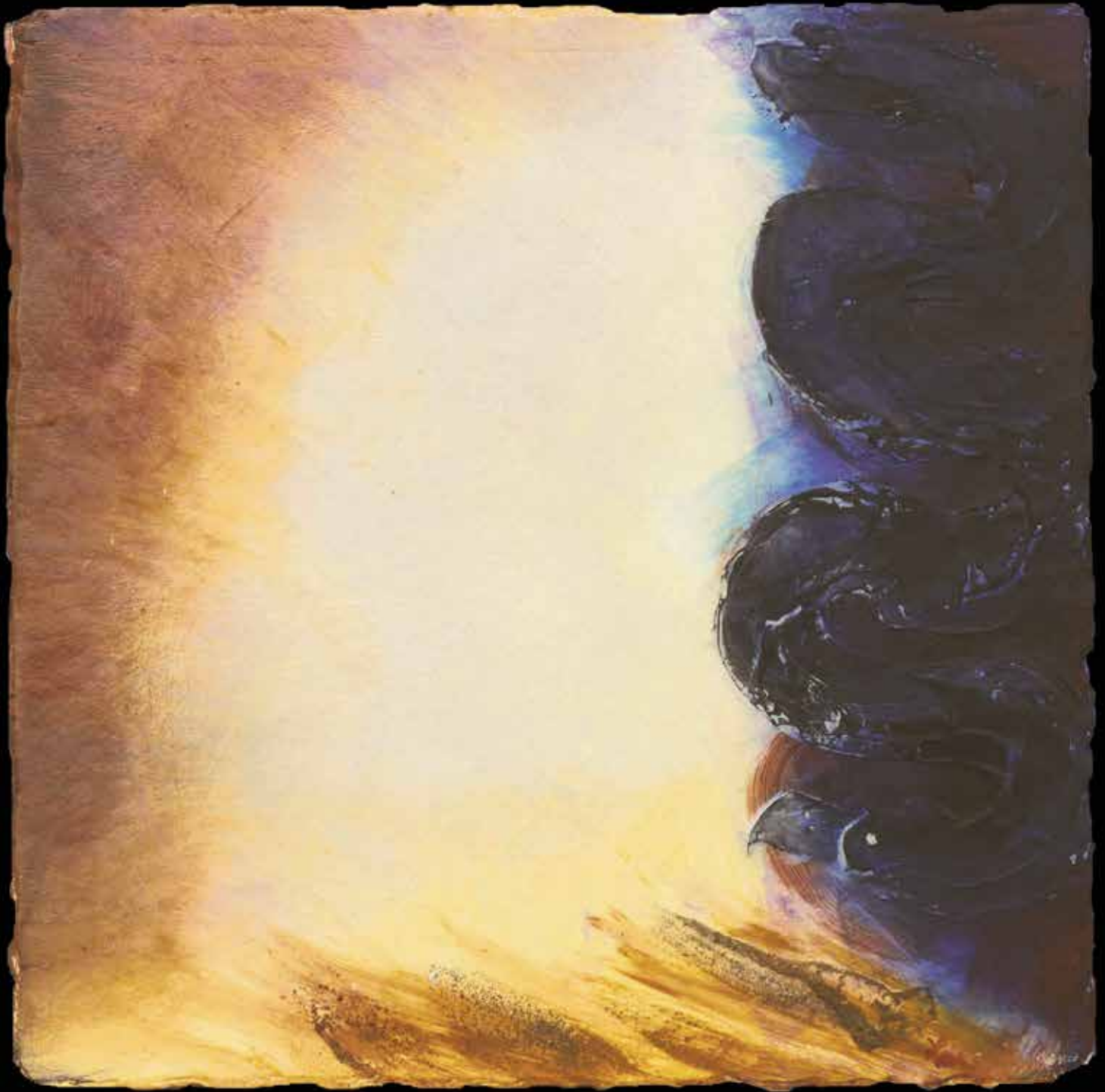
24 x 18 x 2 in.
Acrylic with sand from the
River Jordan and Montana
on floating wood panel



Eyes Opened (Healing of the Blind Man)

The darkness of mud is being washed away and small pieces of clay fall in the lower right. The blue open area depicts a first glimpse of clear vision.

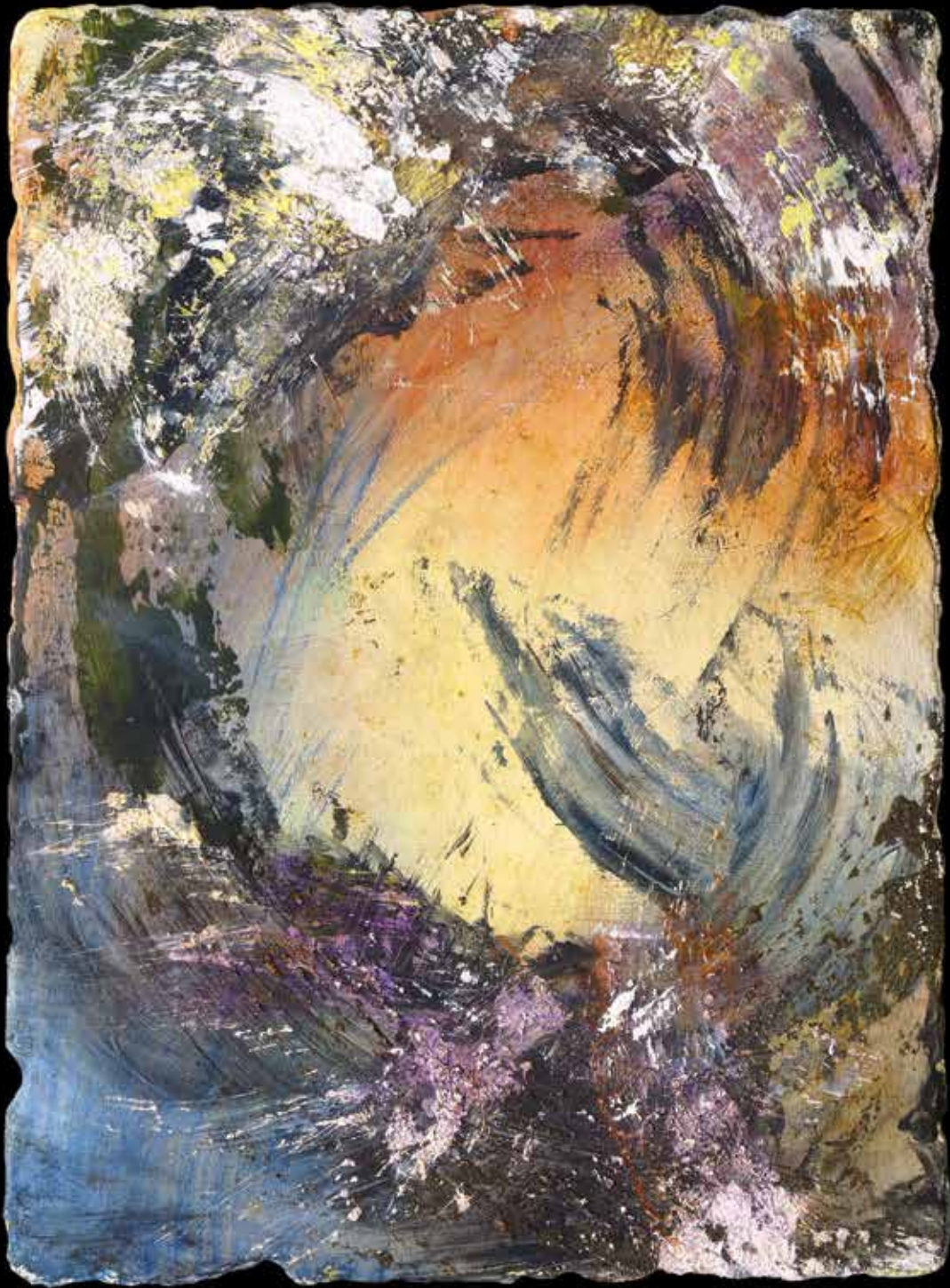
24 x 24 x 2 in.
Acrylic with clay from Montana; and sand from the River Jordan and Montana on floating wood panel



Temptation

The spirit is conveyed through the abstract element of light and dark. Understated yellow paint intensifies the divine presence of light. Hidden in the deep blues and purples is thick paint in the form of a serpent, a metaphor for evil. Sand texture invites the viewer to follow the sacred path, even though it is lined with temptations.

24 x 24 x 2 in.
Acrylic with sand from the
River Jordan and Montana
on floating wood panel



Transformation

As we are tossed about in the rough seas of life—we are transformed by chaos and find peace in knowing the light is always with us. An ocean of purple, blue and green are brashly applied and give way to smooth luminous light yellow and orange.

24 x 18 x 2 in.
Acrylic with sand from the River Jordan and Montana on floating wood panel



Annunciation Moment

An enlightened moment is conveyed through a gold drip line shrouded in spattered paint. Overshadowing light is created with luminous layers of soft yellow paint. Rough dark colors are textured with sand from the River Jordan and Montana.

60 x 60 x 2 in.
Acrylic with sand from the River Jordan and Montana on floating wood panel

"I personally find myself struggling to understand the meaning of our internal 'light' or 'energy,' but when I look at Linda's work I always feel a sense of power emanating from her paintings. I couldn't tell you whether or not I am a 'spiritual' person, but again, when you stand in front of her pieces, there is a sense of something happening."

Chris Riccardo
Former Executive Director of the Holter Museum of Art
Professional Artist
Co-founder of The Omerta Arts Syndicate
Helena, Montana

"Motivated by the pursuit of spiritual meaning and enlightenment in her work, McCray uses light, color, and texture in her powerful, abstract compositions to create emotionally charged images which afford the faithful instruction, the seeker time for reflection, and the pilgrim a place of refuge."

H. Rafael Chacón, Ph.D.
Bruce and Suzanne Crocker Director of the Montana Museum of Art & Culture
Professor of Art History and Criticism, The University of Montana-Missoula
Missoula, Montana

"We found our audience bring their own tales and spiritual meaning to each of the works—and were moved to find that someone could so beautifully illuminate their emotions."

Blair Williams
Owner, The Art Spirit Gallery
Commissioner, Idaho Commission on the Arts
Board Member, Idaho Humanities Council
Coeur d'Alene, Idaho

LINDA McCRAY

Luminosity



LINDA
McCRAY
Studio, LLC

LindaMcCray.com